



Metal Theft Taskforce **IDENTIFICATION BOOKLET**

VERSION 2

openreach
a BT Group business



THE THEFT OF METAL IS A GROWING PROBLEM IN THE UK, DIRECTLY AFFECTING MULTIPLE INDUSTRY SECTORS (POWER, TRANSPORTATION, WATER AND COMMUNICATIONS).

The current cost of metal theft to the UK economy has recently been estimated by ACPO¹ at £770m p.a. This financial impact is dwarfed by the impact on society (inconvenience and potential impact on public health and safety) and commerce.

¹ACPO – ASSOCIATION OF CHIEF POLICE OFFICERS
Conductive Metal Theft Working Group – Metal Theft Problem Profile

Attacks on BT copper cable network have isolated entire communities and disrupted emergency service communications.

Openreach strictly controls the recovery and processing of its own waste cable and it should not be available on the open market. **All cable recovered by BT, or its contractors, is disposed of through Openreach's official channels and should not be offered directly to scrap metal dealers or recyclers.**

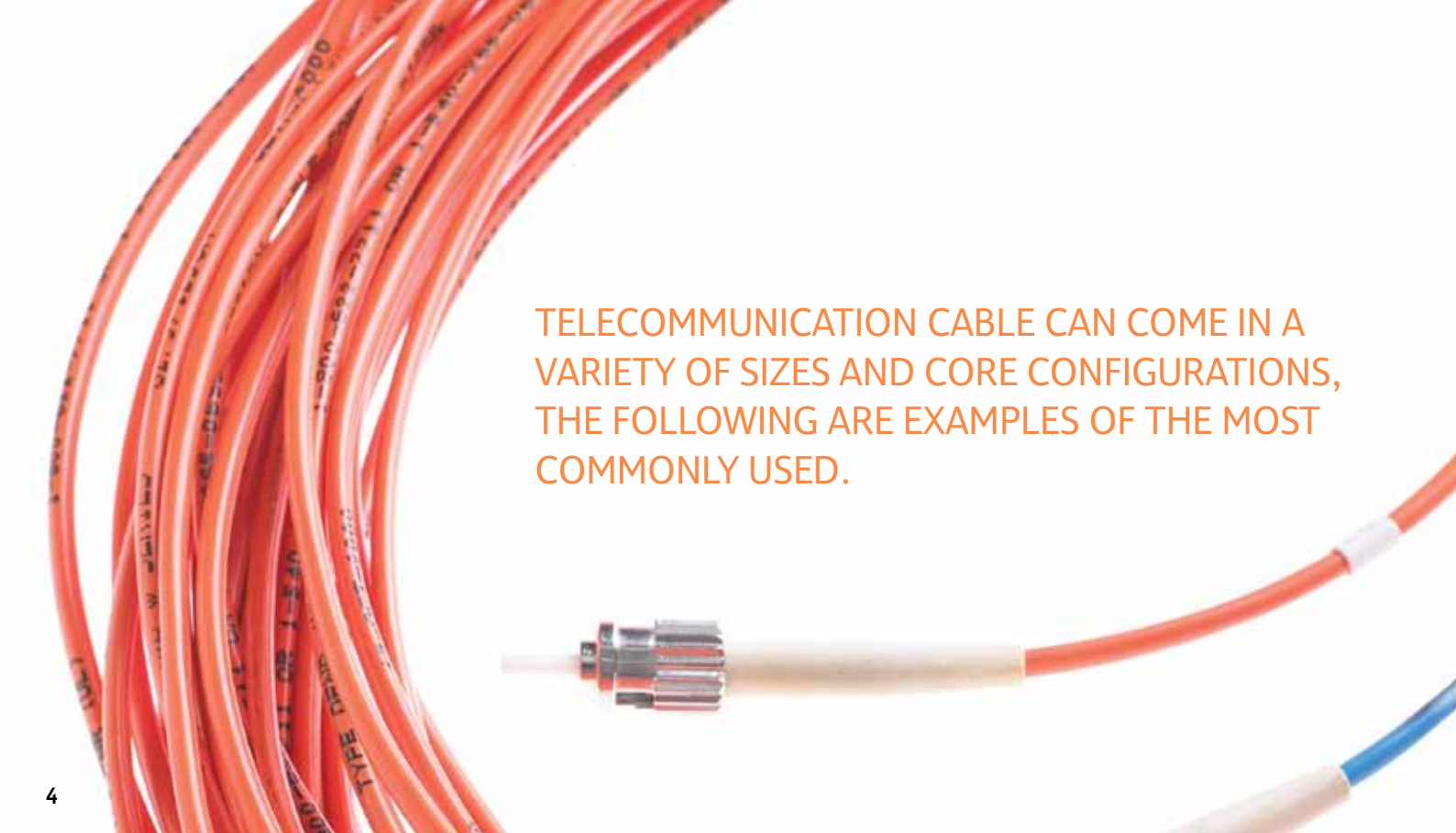
WE MARK – This document is designed to assist in the identification of Openreach owned cables and associated metal assets. It is only a guide and is by no means exhaustive. If in doubt, the Openreach Metal Theft Taskforce will be able to provide formal identification.

WE SEARCH – Openreach and BT Group are working closely with police forces across the UK, The British Metals Recycling Association and Crimestoppers to combat metal theft.

WE PROSECUTE – The BT Metal Theft Taskforce provides dedicated resource and investigates all incidents involving the theft or damage of cable from within our network and operational estate.

CONTACT DETAILS

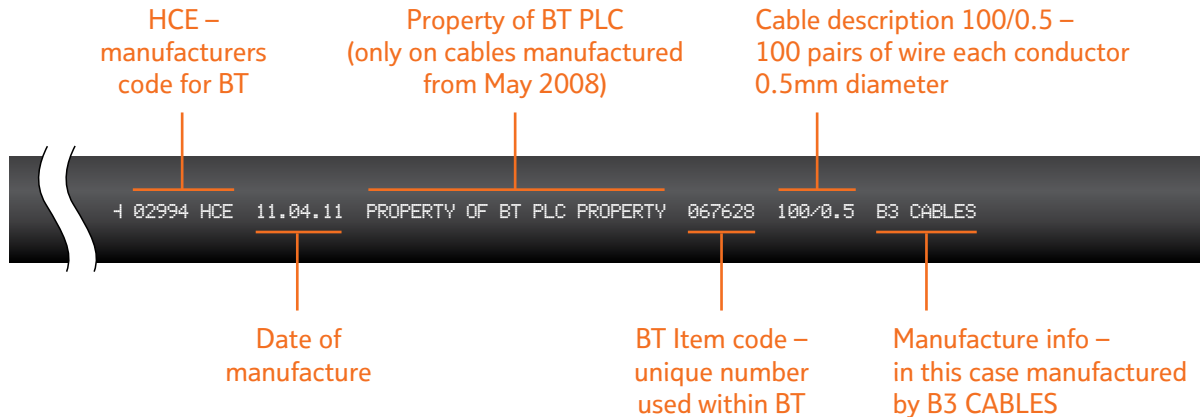
You'll find contact details for BT Security Helpdesk, Operation EIGER, Openreach Network Resilience Unit and Crimestoppers on the inside back cover of this booklet (page 23).

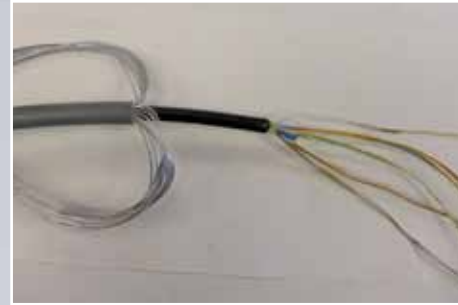
The image features a large, coiled orange telecommunications cable on the left side. On the right side, there is a detailed view of a cable connector. This connector has a white plastic body and a metal housing with multiple pins. A small red light is visible on the side of the connector. The background is a plain, light color.

TELECOMMUNICATION CABLE CAN COME IN A
VARIETY OF SIZES AND CORE CONFIGURATIONS,
THE FOLLOWING ARE EXAMPLES OF THE MOST
COMMONLY USED.

CURRENT CABLE MARKINGS

Some telecommunication cables used by BT have their own unique marking printed onto the outer sheathing. This is an example of a typical cable marking:





5 PAIR 0.5mm SWA TELECOM CABLE

Grease filled steel wire armoured telephone cable

5 pairs 0.5mm conductor

Outer sheath colour – light grey

Layer of galvanised steel wires

Inner sheath colour – black

Diameter – 10mm

This cable also comes in 10, 20, 50 and 100 pair sizes with various core configurations.



300 PAIR 0.4MM PEUT TELECOM CABLE

Air core duct telephone cable

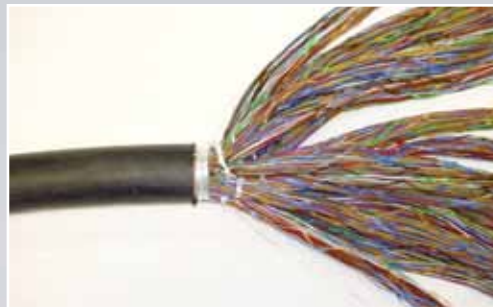
Aluminium moisture barrier adhering to the sheath

300 pair 0.4mm conductor

Sheath colour – black

Diameter – 23mm

This cable also comes in 50 – 4800 pair sizes with various core configurations.



800PR 0.5MM PEUT TELECOM CABLE

Air core duct telephone cable

Aluminium moisture barrier adhering to the sheath

800 pairs 0.5mm conductor

Sheath colour – black

Diameter – 46mm

This cable also comes in 50 – 4800 pair sizes with various core configurations.



1600PR 0.4MM PEUT TELECOM CABLE

Air core duct telephone cable

Aluminium moisture barrier adhering to the sheath

1600 pairs 0.4mm conductor

Sheath colour – black

Diameter – 51.5mm

This cable also comes in 50 – 4800 pair sizes with various core configurations.



20 PAIR 0.5MM PET TELECOM CABLE

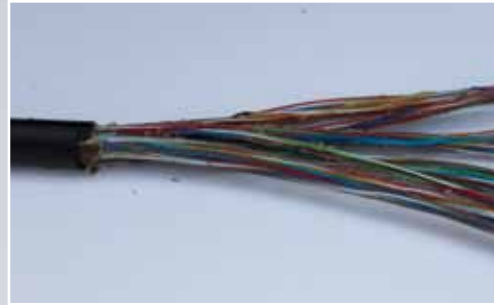
Grease filled duct multi-pair telephone cable

20 pairs 0.5mm conductor

Sheath colour – black

Diameter – 10mm

This cable also comes in 2 – 100 pair sizes with various core configurations.



100 PAIR 0.5MM PET TELECOM CABLE

Grease filled duct telephone cable

100 pairs 0.5mm conductor

Sheath colour – black

Diameter – 24mm

This cable also comes in 2 – 100 pair sizes with various core configurations.



50 PAIR 0.5MM AERIAL CABLE

Grease filled figure 8 aerial cable

50 pairs 0.5mm conductor

Steel support strand

Sheath colour – black

Diameter – 16mm

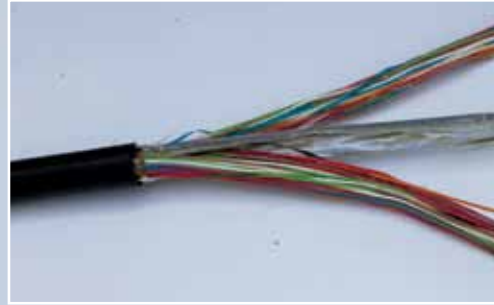
This cable also comes in 10 – 100 pair sizes with various core configurations.



100 PAIR 0.6MM AERIAL CABLE

Grease filled aerial cable
100 pairs 0.6mm conductor
Steel support strand
Sheath colour – black
Diameter – 30mm

This cable also comes in 10 – 100 pair sizes
with various core configurations.



40 PAIR 0.6 TVS (PCM) CABLE

Grease filled duct telecom cable

40 pairs 0.6mm conductor

Transverse screen – this is a second
foil barrier separating the inner core

Diameter – 20mm

This cable also comes in 20, 40 and 80 pair sizes
all with 0.6mm conductors.



CAT 5 TYPE MULTI-COLOURED STRANDED CABLE

Purple/lilac sheathing
17mm diameter with markings
“Tyco electronics EVOTAM”
25 or 32 pair cable

LEGACY CABLE

LEAD-SHEATHED

Lead-sheathed cable was installed in the ground up until the late 1960s, but is still very common. It comprises of an outer layer of lead – sometimes wrapped in hessian and bitumen for protection, with a paper-wrapped copper core.

Lead cables come in a variety of sizes, from 1cm to nearly 10cm diameter. The inner core can also differ in its appearance – many trunk cables will have a number of thick coaxial tubes at the centre.



POLYTHENE-SHEATHED CABLE

After lead-sheathed cable was discontinued, BT introduced a polythene-sheathed cable. The outer core is made up of a translucent or white coloured polythene sheath, with an aluminium barrier between it and the core. The core is still paper-wrapped copper and is identical to that used in the previous lead cables. Again it comes in a variety of sizes and core configuration.

The pairs are insulated with either plastic or paper sheathing.



Coaxial cable was used to carry high grade circuits prior to fibre optics. This type of cable consists of copper coaxial tubes wrapped in a steel ribbon. Again, it comes in a variety of sizes and core configurations.



These are examples of manufacturers' ID labels found on legacy cable. ID labels are located between the sheathing and copper conductors.





FIBRE OPTICAL CABLE

The examples here are of fibre optical cables and tubing. This type of cable consists of plastic tubing which protects the glass conductors. This cable does not contain any metal but is used extensively within the telecommunications network.



STOLEN CABLE

It is common practice for thieves to process the cable before selling it on by removing its outer sheathing. This is generally achieved by stripping the outer sheathing and burning the conductors to remove the insulation. The following photos are examples of the results of this practice.

Stolen cable can also be found cut into 1 to 2 metre length “sticks”.



BT CABLE DRUM LABELS

The following are typical labels which would be affixed to a cable drum owned by BT.



CABLE TRAILERS

Larger cable drums are transported by cable trailers. The following are examples of the type of trailers used by BT.



CABLE WINCH

Cable winches are used by Openreach and its contractors to install and remove cable from within the underground network. The following photographs are examples of the different types used by BT and contractors.



CRIMESTOPPERS

Crimestoppers is an independent charity helping to fight crime. It is not part of the police or government.

The charity believes that people and their communities have the right to live without crime and without the fear of crime.

Their mission is to provide a means to detect, reduce and prevent crime through the provision of information about crimes to law enforcement from anonymous sources.

Crimestoppers operates 0800 555 111 and www.crimestoppers-uk.org for people to pass on information about crimes anonymously. They will not take users' names or any personal details and information cannot be traced or recorded. As users remain anonymous, it also means they will not go to court or give a statement to police.



FOUND AN ITEM THAT'S SHOWN IN THIS BOOKLET? THEN PLEASE CONTACT US

BT SECURITY HELPDESK (24HRS)

0800 321999

OPENREACH NETWORK RESILIENCE UNIT

network.resilience.unit@openreach.co.uk

OPERATION EIGER

intel@bt.com

CRIMESTOPPERS

0800 555 111 www.crimestoppers-uk.org

For more information please visit
www.openreach.co.uk/cableprotection

The telecommunications services described in this publication are subject to availability and may be modified from time to time. Services and equipment are provided subject to British Telecommunications plc's respective standard conditions of contract. Nothing in this publication forms any part of any contract. BT, Openreach, the BT logo and the Openreach identity are trademarks of British Telecommunications plc.

© British Telecommunications plc 2015.
Registered office: 81 Newgate Street, London EC1A 7AJ
Registered in England No: 1800000
Produced by Openreach
Designed by Westhill.co.uk
Printed in England

PHME 75612